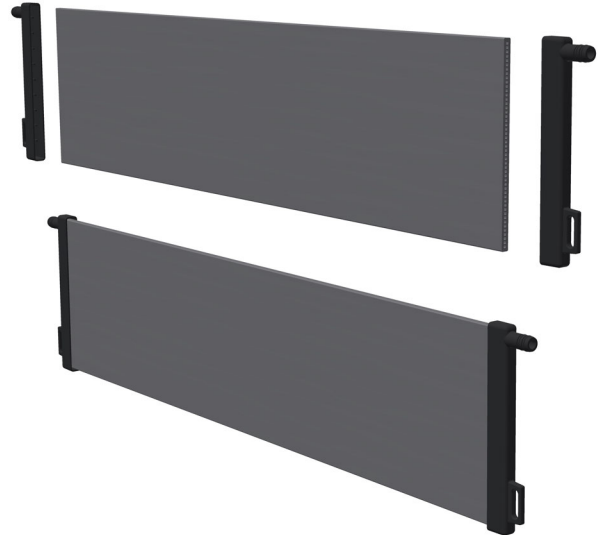


## Product Data Sheet - SiC Ceramic Plate

### Description:

- Flat sheet ceramic plate with filter active layer on the outside (submerged out-to-in filtration)
- Double side end-cap (filtered water outlet) for high flux operation
- Double O-ring connection
- Self-degassing due to filtered water outlet at the top of the end-cap

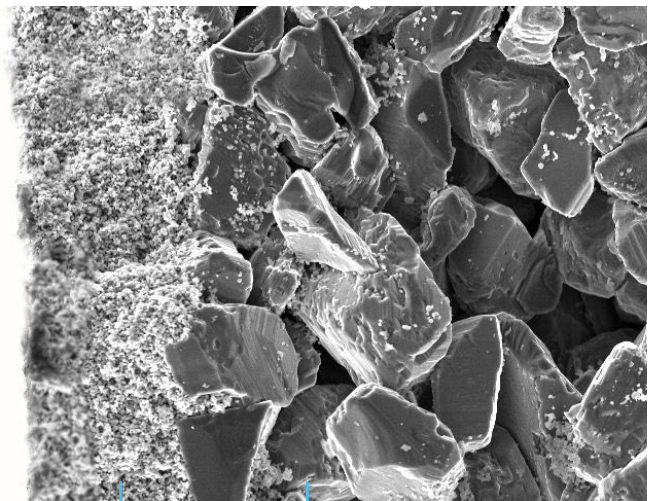


### Specifications:

Dimension LxWxH [mm]	656x12x151
Membrane material	Silicon Carbide
End-cap material	Reinforced fiberglass PPS (NSF61)
Active membrane surface [m <sup>2</sup> ]	0.177
Pore size filter active layer [µm]	0.1
pH range	0 - 14
Permeability [LMHbar]	18,000 @ 20°C
Isoelectric point	pH 3

### Specials:

- Highly asymmetric membrane structure
- Filter active layer directly coated on large pore sized membrane body
- Very high porosity of around 43%
- Chemically inert at any pH
- Hydrophilic material providing an unmatched high flux operation
- Repels negatively charged particles, like bacteria, algae, MLSS, TEP and oil
- Hardest available membrane material



Filter active layer  
on the outside of the membrane plate  
0.1 micron

Membrane body (substrate)  
with very large pore size  
8 micron